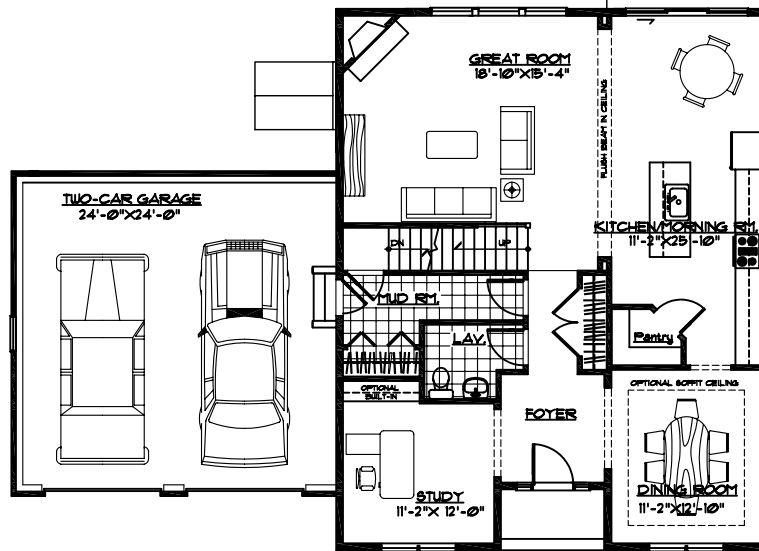




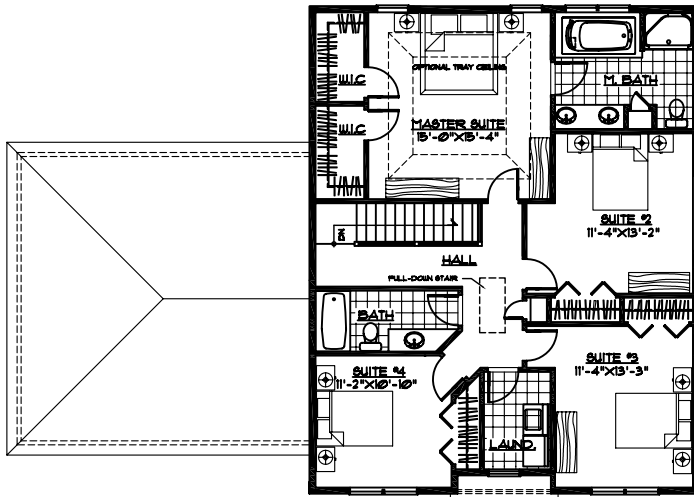
Front View

PATIO  
200 S.F.



First Floor

1,245 S.F.



Second Floor

1,268 S.F.



# The Residence @ Home Site 11

Hummock Way, Carver, MA

Total Living Area: 2,513 S.F.

Plans are subject to change. All dimensions have been calculated from architectural drawings and may be subject to minor variations during construction. All optional features are not noted. Please refer to standard features sheet and price list for details.